

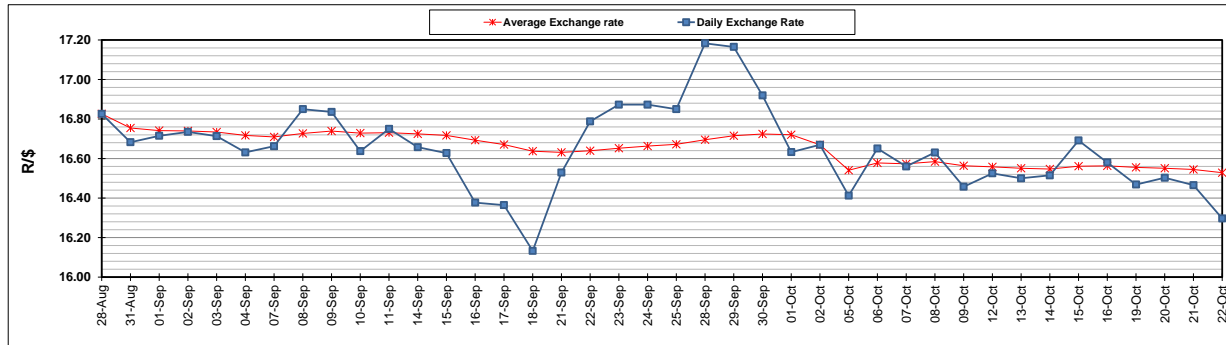
	PETROL 95 ULP	PETROL 93 ULP & LRP	DIESEL 0.05%	DIESEL 0.005%	ILL. PAR.
GAUTENG PUMP PRICE (SA c/l) AS FROM 07/10/2020	1,486.000	1,466.000	-	-	-
WHOLESALE PRICE (SA c/l) AS FROM 07/10/2020	-	-	1,237.560	1,238.960	640.828
SINGLE NATIONAL MAXIMUM RETAIL PRICE	-	-	-	-	798.000
BASIC FUEL PRICE - 22/10/2020 (SA c/l)	502.438	498.660	486.188	489.505	465.006
PRESS RELEASE CONTRIBUTION TO BFP 07/10/2020 - 22/10/2020 (SA c/l)	533.470	523.470	486.630	488.030	436.128
UNIT OVER/(UNDER) RECOVERY - 22/10/2020 (SA c/l)	31.032	24.810	0.442	(1.475)	(28.878)
AVERAGE BASIC FUEL PRICE 02/10/2020 - 22/10/2020	521.326	513.078	496.671	499.042	467.917
AVERAGE UNIT OVER/(UNDER) RECOVERY 02/10/2020 - 22/10/2020	18.544	14.992	7.959	7.588	(16.589)

ANALYSIS MOVEMENT OF AVERAGE OVER/(UNDER) RECOVERY

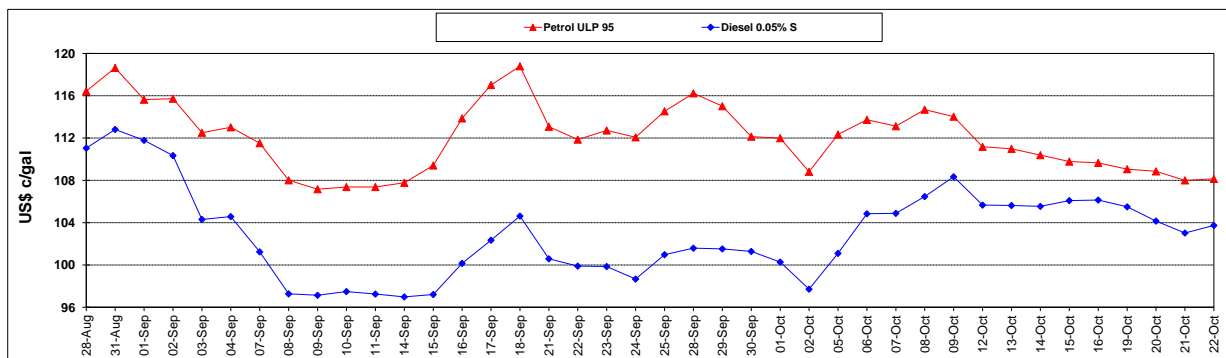
	PETROL 95	PETROL 93	DIESEL 0.05%	DIESEL 0.005%	ILL. PAR.
- MOVEMENT IN INTERNATIONAL PRODUCT PRICES	12.488	9.032	2.189	1.791	(22.024)
- MOVEMENT IN EXCHANGE RATE	6.056	5.960	5.770	5.797	5.435
AVERAGE UNIT OVER/(UNDER) RECOVERY 02/10/2020 - 22/10/2020	18.544	14.992	7.959	7.588	(16.589)

R/\$ EXCHANGE RATE - (R/\$16.2970 - 22/10/2020)

EXCHANGE RATE USED IN BASIC FUEL PRICE



INTERNATIONAL PRODUCT PRICES OF BASKET USED IN BASIC FUEL PRICE



BASIC FUEL PRICE IN SA CENTS PER LITRE

